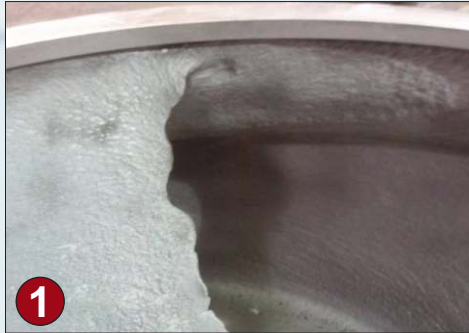


# METALCLAD<sup>®</sup> **CeramAlloy<sup>®</sup> CP+AC**

## Repair & rebuild all types of equipment!

METALCLAD<sup>®</sup> CeramAlloy<sup>®</sup> CP+AC is a two component, 100% solids, polymer composite specifically formulated to provide effective repair and rebuilding characteristics on all types of fluid flow equipment.

- Trowelable
- Requires No Heat
- Unlimited Shelf Life
- 100% Solids
- Safe & Simple To Use



### Repairs & Protects...

- Heat Exchanger  
Tube Sheets &  
Water Boxes
- Pump Impellers &  
Casings
- Valves & Pipework
- Housings & Tanks
- Cooling Towers
- Propeller Blades
- ...and more

CeramAlloy<sup>®</sup> CP+AC is a paste when mixed, so it is easily applied. When cured, however, CeramAlloy<sup>®</sup> CP+AC becomes a metal-hard, ceramic-like compound. CeramAlloy<sup>®</sup> CP+AC is the best material to use when making repairs to areas deeply damaged by erosion/corrosion environments on all types of fluid flow equipment.



**ENECON<sup>®</sup> Corporation**  
The Fluid Flow  
Systems Specialists.  
[www.enecon.com](http://www.enecon.com)

Toll Free: 888-4-ENECON (888-436-3266)

Tel: 516 349 0022 · Fax: 516 349 5522

Email: [info@enecon.com](mailto:info@enecon.com)

6 Platinum Court · Medford, NY 11763-2251

## Technical Data

Volume capacity per kg.	36 in <sup>3</sup> / 592 cc	
Mixed density	0.061 lbs per in <sup>3</sup> / 1.69 gm per cc	
Coverage rate per kg. @ 0.25 in / 6mm	144 in <sup>2</sup> / 0.092 m <sup>2</sup>	
Shelf life	Indefinite	
Volume solids	100%	
Mixing ratio	Base	Activator
By volume	5	2
By weight	3.6	1

## Working Life & Cure Times

Ambient Temperature	Working Life	Machining Light Load	Full Mechanical	Chemical Immersion
41°F 5°C	4 hrs	48 hrs	96 hrs	8 days
59°F 15°C	2 hrs	24 hrs	48 hrs	5 days
77°F 25°C	1 hr	12 hrs	24 hrs	3 days
86°F 30°C	40 min	8 hrs	20 hrs	2 days

## Physical Properties

	Typical Values		Test Method
Compressive strength	13,500 psi	945 kg/cm <sup>2</sup>	ASTM D-695
Flexural strength	8,500 psi	595 kg/cm <sup>2</sup>	ASTM D-790
Izod impact strength	1.3 ft lbs/in	0.69 j/cm	ASTM D-256
Hardness - Shore D	86		ASTM D-2240
Tensile Shear Adhesion			
Steel	4000 psi	280 kg/cm <sup>2</sup>	ASTM D-1002
Aluminum	2800 psi	196 kg/cm <sup>2</sup>	ASTM D-1002
Copper	2500 psi	175 kg/cm <sup>2</sup>	ASTM D-1002
Stainless steel	4100 psi	287 kg/cm <sup>2</sup>	ASTM D-1002
Surface resistivity	1 x 10 <sup>15</sup> ohms		ASTM D-257
Volume resistivity	1 x 10 <sup>15</sup> ohm/cm		ASTM D-257
Dielectric constant	7.5		ASTM D-150
Dielectric strength	500 volts / mil		ASTM D-115
Breakdown voltage	18.6 Kv		ASTM D-115

## Chemical Resistance

Acetic acid (0-10%) . . . . .	EX	Methyl alcohol . . . . .	G
Acetic acid (10-20%) . . . . .	G	Methyl ethyl ketone . . . . .	G
Acetone . . . . .	G	Nitric acid (0-10%) . . . . .	EX
Aviation fuel . . . . .	EX	Nitric acid (10-20%) . . . . .	G
Butyl alcohol . . . . .	EX	Phosphoric acid (0-5%) . . . . .	EX
Calcium chloride . . . . .	EX	Phosphoric acid (5-10%) . . . . .	G
Crude oil . . . . .	EX	Potassium chloride . . . . .	EX
Diesel fuel . . . . .	EX	Propyl alcohol . . . . .	EX
Ethyl alcohol . . . . .	G	Sodium chloride . . . . .	EX
Gasoline . . . . .	EX	Sodium hydroxide . . . . .	EX
Heptane . . . . .	EX	Sulfuric acid (0-10%) . . . . .	EX
Hydrochloric acid (0-10%) . . . . .	EX	Sulfuric acid (10-20%) . . . . .	G
Hydrochloric acid (10-20%) . . . . .	G	Toluene . . . . .	G
Kerosene . . . . .	EX	Xylene . . . . .	EX

EX - Suitable for most applications including immersion.  
G - Suitable for intermittent contact, splashes, etc.

# Using CeramAlloy® CP+AC

**Surface Preparation** - METALCLAD® CeramAlloy® CP+AC should only be applied to clean, dry and well-roughened surfaces.

1. Remove all loose material and surface contamination and clean with a suitable solvent which leaves no residue on the surface after evaporation such as acetone, MEK, isopropyl alcohol, etc.
2. Clean/roughen surface by abrasive blasting.
3. If necessary, apply moderate heat and/or allow the component(s) to 'leach' to remove ingrained contaminants.
4. Thoroughly roughen surfaces by abrasive blasting to achieve a 'white metal' degree of cleanliness and an anchor pattern of 3 mils.

Note: In situations where adhesion is not desired, such as when making molds and patterns or to ease future disassembly, apply a suitable release agent (mold release compound, paste wax, etc.) to the appropriate surfaces.

**Mixing & Application** - For your convenience, the METALCLAD® CeramAlloy® CP+AC Base and Activator have been supplied in precisely measured quantities to simplify mixing of full units. Should a small amount of material be required, measure out 5 parts Base and 2 parts Activator by volume (5:2, v/v) on a clean mixing surface. Keep Base and Activator separated until ready to mix and apply.

Using a spatula, putty knife or other appropriate tool, mix thoroughly until all streaks disappear, resulting in a uniform color and consistency. Spread material out in a thin layer over the mixing surface to force out any trapped air. This procedure will also maximize working time.

Some deeply eroded areas, e.g. cut-waters, impeller leading edges, diffuser vanes, etc. may require the use of reinforcement tape or other suitable means to bridge the damaged area(s) followed by the application of additional material.

**Health & Safety** - Every effort is made to insure that ENECON® products are as simple and safe to use as possible. Normal industry standards and practices for housekeeping, cleanliness and personal protection should be observed.

Please refer to the detailed MATERIAL SAFETY DATA SHEETS (MSDS) supplied with the material (also available on request) for more information.

**Cleaning Equipment** - Wipe excess material from tools immediately. Use acetone, MEK, isopropyl alcohol or similar solvent as needed.

**Technical Support** - The ENECON® engineering team is always available to provide technical support and assistance. For guidance on difficult application procedures or for answers to simple questions, call your local ENECON® Fluid



All information contained herein is based on long term testing in our laboratories as well as practical field experience and is believed to be reliable and accurate. No condition or warranty is given covering the results from use of our products in any particular case, whether the purpose is disclosed or not, and we cannot accept liability if the desired results are not obtained.

Copyright © 2012 by ENECON® Corporation. All rights reserved. No part of this work may be reproduced or used in any form or by any means - graphic, electronic or mechanical including photocopying, recording, taping or information storage and retrieval systems - without written permission of ENECON® Corporation.

