

Remember - ENECRETE® WS is the water sealing component of our leak and seep stopping system - see information on **ENECRETE® WP** (the water plugger) to stop running leaks and for pointing and grouting...

*Revolutionary products . . .*

*. . . for rebuilding, resurfacing and protecting all types of fluid flow machinery, equipment and structures.*

ENECRETE® WS

# ENECRETE® WS

*the water sealer...*

Protects concrete, mortar, block and brick

Waterproofs and seals

Excellent adhesion

Simple to use

## The jobsite waterproofer and leak sealer that coats, fills, seals & protects

ENECRETE® WS combines the best characteristics of traditional cementitious materials with the advanced adhesion and protection of the highest quality polymers. This extraordinary material provides an easy-to-use compound that permanently seals brick, concrete and block from infiltration and exfiltration.



Before



After



Before



After

ENECRETE® WS is a protective and waterproofing product for masonry structures. It employs a multiple curing reaction process to impart its exceptional properties. The reactions that occur upon mixing combine the hydration reaction of calcium / silica / aluminum cement, for strength and durability, with the film-forming reaction of a polymer adhesive, for waterproofing, chemical resistance and adhesion.

ENECRETE® WS can be used as a negative side / positive side flow preventive coating and as a repair mortar, depending on the component mixing ratio used.

WS is a dual-component product that is easy to prepare and apply in the field. One product that can be used to solve two common problems in industry — concrete attack and water infiltration.



**ENECON** Corporation  
The Fluid Flow  
Systems Specialists.

[www.enecon.com](http://www.enecon.com)

Toll Free: 888-4-ENECON

Tel: 516 349 0022 · Fax: 516 349 5522

Email: [info@enecon.com](mailto:info@enecon.com)

6 Platinum Court · Medford, NY 11763-2251

ENECRETE® WS

## Technical Data

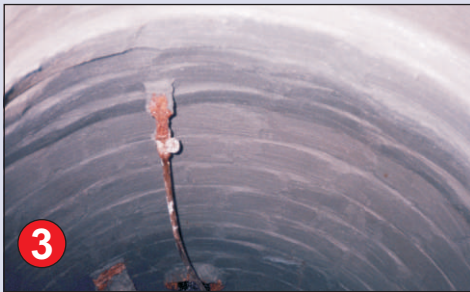
<b>Volume capacity per 15 kg.</b>	.39 ft <sup>3</sup> 675 in <sup>3</sup> 11060 cc	
<b>Coverage per 15 kg kit</b>	65 - 75 ft <sup>2</sup> @ 1/16" / 6.5 - 7.5 m <sup>2</sup> @ 1.5 mm depending on surface roughness	
<b>Shelf life</b>	18 Months in unopened, original containers.	
<b>Mixing ratio</b>	POWDER	LIQUID
by volume	1.3	1.0
by weight	3.3	1.0
<b>Working Life</b>	1 hour	



**1. The problem - walls under chemical attack with active water leaks...**



**2. After active leaks have been plugged with ENECRETE® WP, the walls are brushed with two coats of WS - the water sealer.**



**3. The result - protected, sealed and waterproofed with ENECRETE® WS in a few easy steps.**

Your Local ENECON® Fluid Flow Systems Specialist

## Using ENECRETE® WS

**Surface Preparation** - ENECRETE® WS should only be applied to clean, damp, firm and roughened surfaces.

1. Remove all loose material and surface contamination, such as grease, oil, mold, algae and other coatings.
2. Depending on the surface, remove contamination by detergent and/or solvent washing, abrasive blasting, steam cleaning, pressure washing or other suitable methods.
3. After removing all surface and sub-surface contamination, flush the surface with clean water and allow surface water to dissipate.

**Mixing & Application** - For your convenience, the ENECRETE® WS powder and liquid have been supplied in precisely measured quantities to simplify mixing. Remove the powder and liquid from the bucket, pour the liquid into the bucket and slowly add the powder to the liquid as you are mixing. To facilitate mixing of a full unit, a mechanical mixing device is recommended, such as a drill and a general purpose mixer blade.

- Brushable consistency — add the entire gallon container of liquid to the bucket.
- Trowelable consistency — add only enough liquid to obtain the desired consistency.

ENECRETE® WS should only be applied to a damp surface with no standing water present. Apply with a masonry or wallpaper paste brush. It should be applied in 2 coats, with each coat approximately 1/16 inch / 1.5 mm thick. The second coat should be applied perpendicular to the first coat. Recoat time at 77 °F / 25 °C is approximately 1 1/2 hours. Do not apply if the surface or air temperature is below 41°F / 5 °C.

**Health & Safety** - Every effort is made to insure that ENECON® products are as simple and safe to use as possible. Normal industry standards and practices for housekeeping, cleanliness and personal protection should be observed. Please refer to the detailed MATERIAL SAFETY DATA SHEETS (MSDS) supplied with the material (also available on request) for more information.

**Storage** - Store in closed containers at a temperature between 41°F and 95°F, 5°C and 35°C in a clean, dry area.

**Cleaning Equipment** - Wash gloves, mixing bucket and utensils with water. Once hardened, remove by mechanical methods.

**Technical Support** - The ENECON® engineering team is always available to provide technical support and assistance. For guidance on difficult application procedures or for answers to simple questions, call your local ENECON® Fluid Flow Systems Specialist or the ENECON® Engineering Center.

All information contained herein is based on long term testing in our laboratories as well as practical field experience and is believed to be reliable and accurate. No condition or warranty is given covering the results from use of our products in any particular case, whether the purpose is disclosed or not, and we cannot accept liability if the desired results are not obtained.

Copyright © 2010 by ENECON® Corporation. All rights reserved. No part of this work may be reproduced or used in any form or by any means - graphic, electronic or mechanical including photocopying, recording, taping or information storage and retrieval systems - without written permission of ENECON® Corporation.